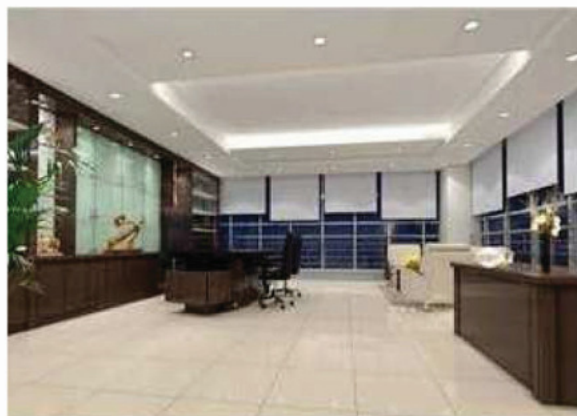


Specification

Product Code	0201	0202	0221	0222
Model No.	GL-APO-MR 6-4-5-WW	GL-APO-MR 6-4-5-NW	GL-APO-GU 10-4-5-WW	GL-APO-GU 10-4-5-NW
Description	GrinLites Apollo MR16 5Watt LED Down Light		GrinLites Apollo GU10 5Watt LED Down Light	
Colour (White)	Warm White	Neutral White	Warm White	Neutral White
CCT (K)	2700-3000	3700-4300	2700-3000	3700-4300
Luminous Flux (lm)	280	350	280	350
Input Voltage (V)	12DC		100-250AC 50/60Hz	
Wattage (W)	5			
LED Quantity (PCS)	4			
Beam Angle (Degree)	50			



- The total lumen outputs shown above may vary with different applications.
- Temperature data may vary due to different room temperature.
- Colour temperature may change from variation of bin group.
- Power consumption may vary $\pm 1W$ from the use of different variety of LEDs and electronic components.
- WW stands for Warm White and NW stands for Neutral White

Benefits and Features

- Energy saving up to 90%
- Low running temperature $<60^{\circ}C$
- Micro ventilation to achieve better cooling result and prevent dust accumulating on top of the enclosure during the life time
- Reflecting optical magazine to maintain reliable light output and high lighting efficiency
- Beam angle >50 degree
- 3 year warranty

CE RoHS



Application

- Office Lighting
- Retail Lighting
- Residential Lighting
- Industrial Lighting



GrinLites
LED Down Light

AC Techart Electronics

4 Eton Court, Hallam, VIC 3803

PH 03 8759 0018 FAX 03 8774 2076 EMAIL: admin@actechart.com.au